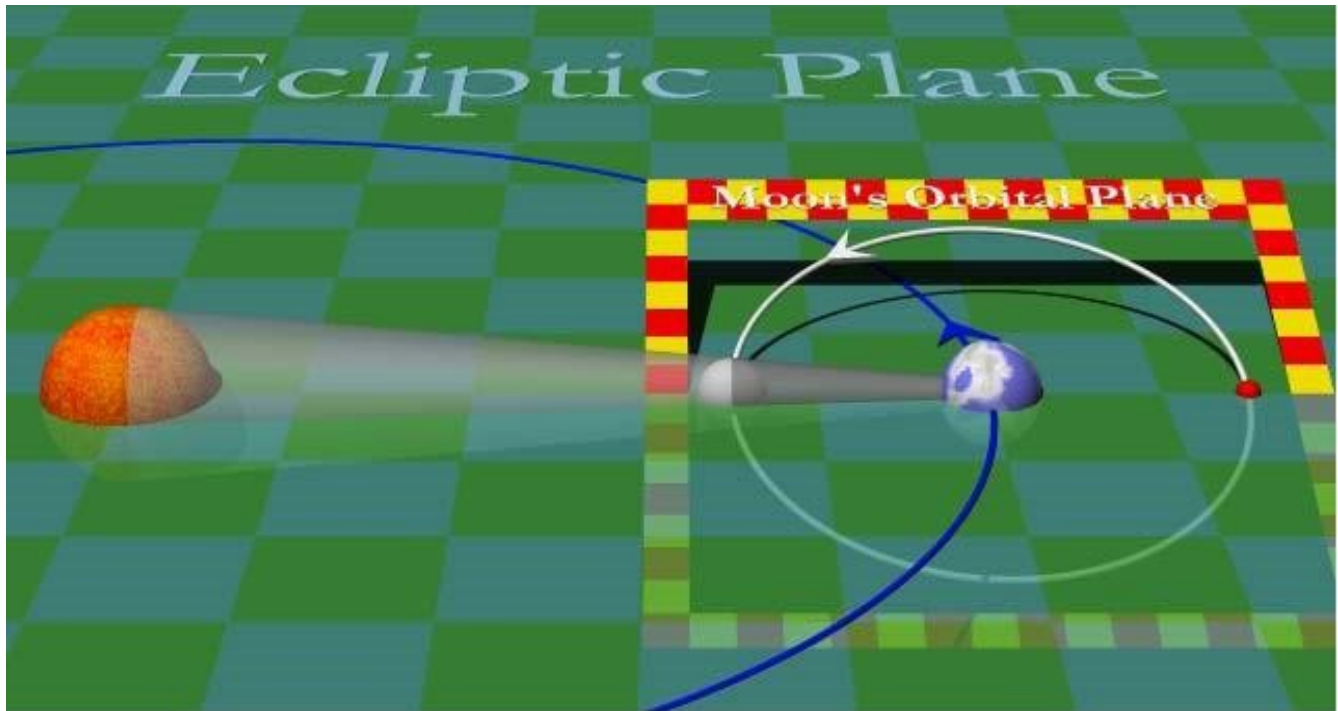


## The Lunar Nodes transiting Sagittarius/Gemini: An Ideological Transformation

By: Gary P. Caton

The Lunar Nodes are perhaps the most enigmatic of symbols occupying any Horoscope. They have been used by astrologers for everything from timing housing and financial market fluctuations to theorizing individual past life scripts and karmic conditions and finding the soul's destiny or direction. When faced with such a difficult interpretive dilemma, I have always thought it best to go back to the beginning and ask questions. So, what exactly *are* the lunar nodes, anyway?

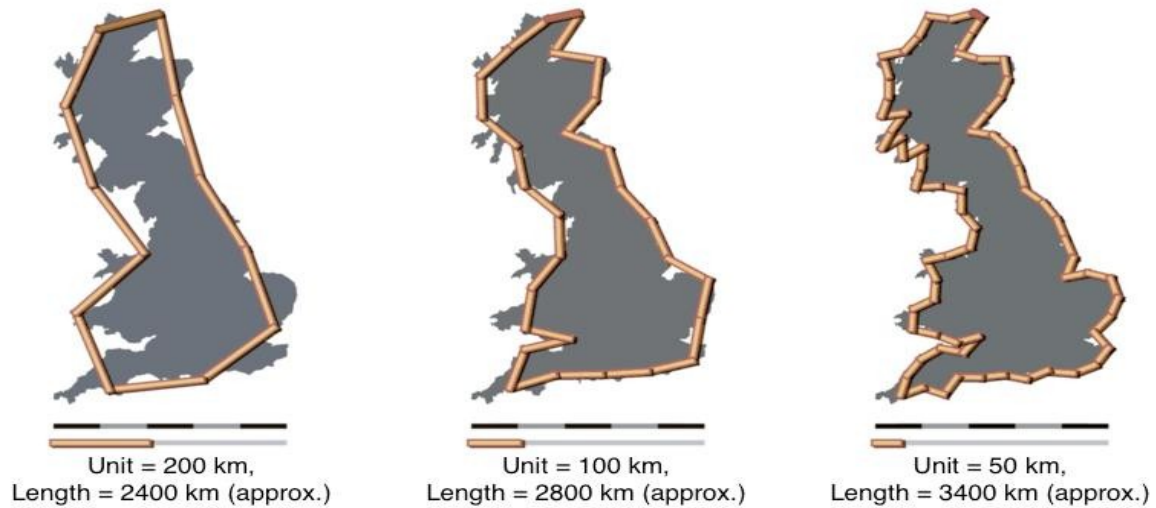


Put succinctly, the Lunar Nodes are the points of intersection between the Earth's orbit and the Moon's.

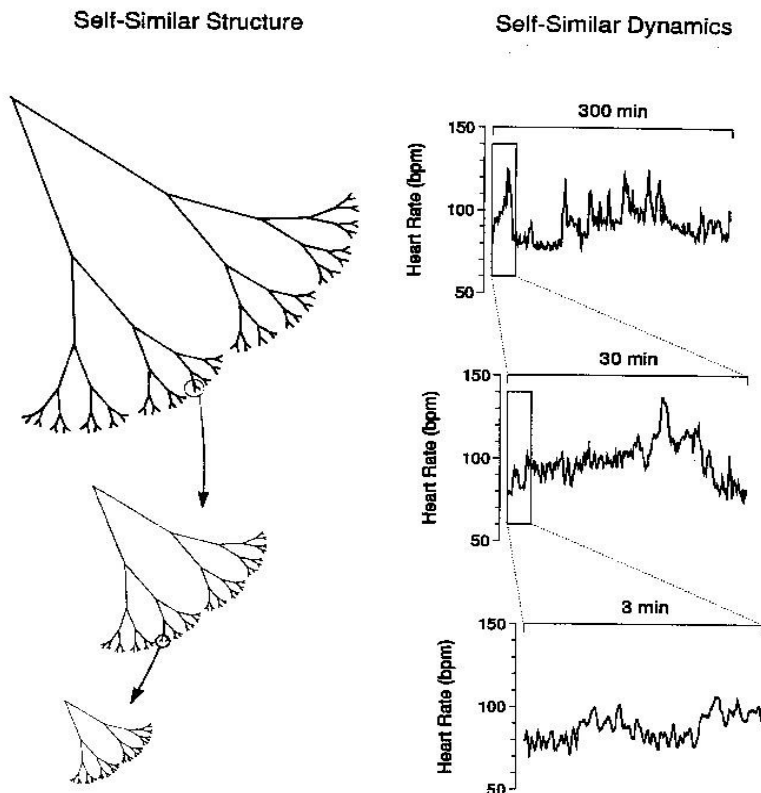
The Earth's orbital plane is commonly called the Ecliptic. This is because it is the path which the Sun appears to follow through the sky, and when the Sun and Moon align with her points of intersection with this plane -we have an Eclipse. Therefore, the Nodes are fundamentally the places in the sky where we can expect Eclipses to fall at any given time.



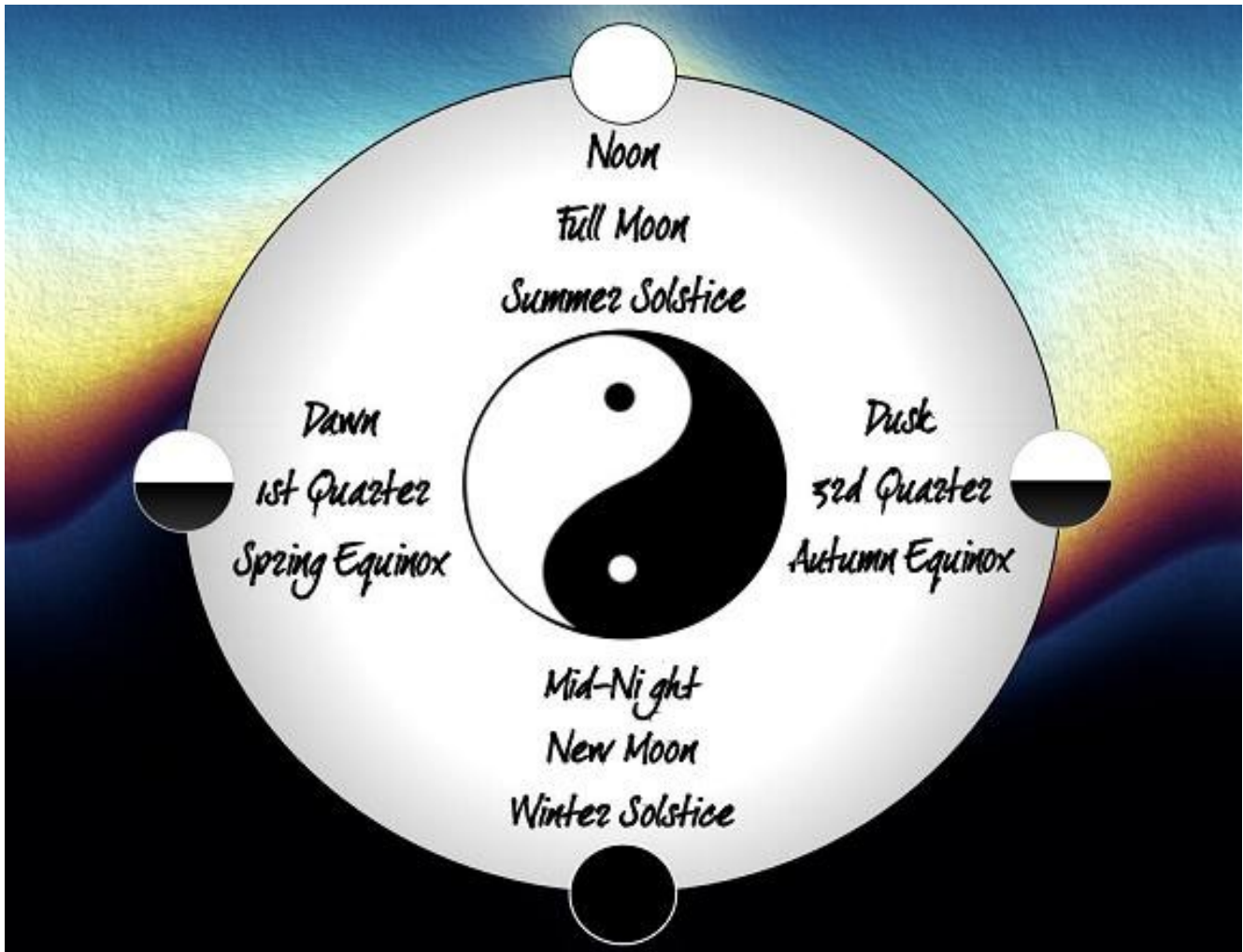
To really understand the power of an Eclipse you must understand that Time here on Earth is Fractal. A **fractal** is a geometric shape that can be split into parts, each of which is (at least approximately) a reduced-size copy of the whole, a property called self-similarity. A **self-similar** object is approximately similar to a part of itself (i.e. the whole has the same shape as one or more of the parts). Many objects in the natural world, such as coastlines, are statistically self-similar: parts of them show the same statistical properties at many scales.



**Scale invariance** is a more exact form of self-similarity where at any magnification there is a smaller piece of the object that is similar to the whole. For instance, from outer space the branching networks in a river system look very similar to those in a tree or a mammalian lung. The pattern persists across scales.



Time on Earth is fractal. It is measured by the constant repetition of the primal alternations of Darkness and Light. One day is made up of a light phase and a dark phase. Every 29 days we see the completion of the light and dark Lunar phases. Every 13 Lunations we see the completion of the light and dark Solar phases via the seasons. The pattern persists across scales.

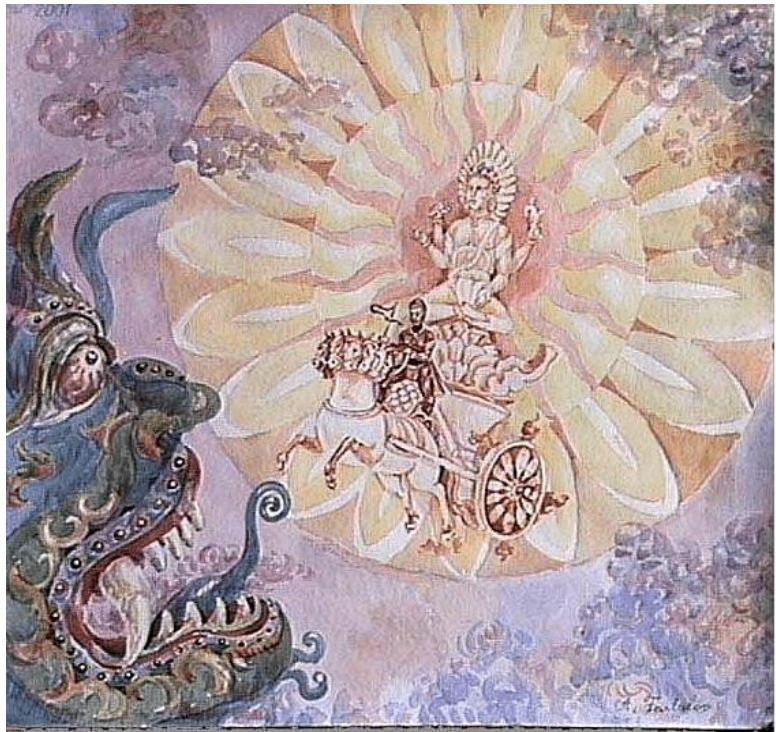


With an average life expectancy (in the developed world) this means we will see 1040 Lunar cycle repetitions and nearly 29,000 daily cycles of light/dark. This rhythm of light/dark is completely ingrained into our bodies and psyches. For instance, without the emotional processing of REM dream-sleep in the nocturnal cycle we will very quickly go insane!

So when there is a disruption of this pattern, via an Eclipse, then the natural flow of the dark/light fractal is stopped in its tracks. There is darkness where there should be light. It is as if the Laws of our Universe are temporarily inverted. The World is stood on its head. Granted, this happens twice a year, to a greater or lesser extent (depending on the power of the particular eclipse) –but compared to the massive numbers of regular lunar and daily cycles we experience, eclipses are fairly rare and so significant simply in terms of frequency, but much more significant when thought of as a Disruption of Time –and so can be experienced in a way similar to when a person is deprived of sleep. Things can get a little crazy.



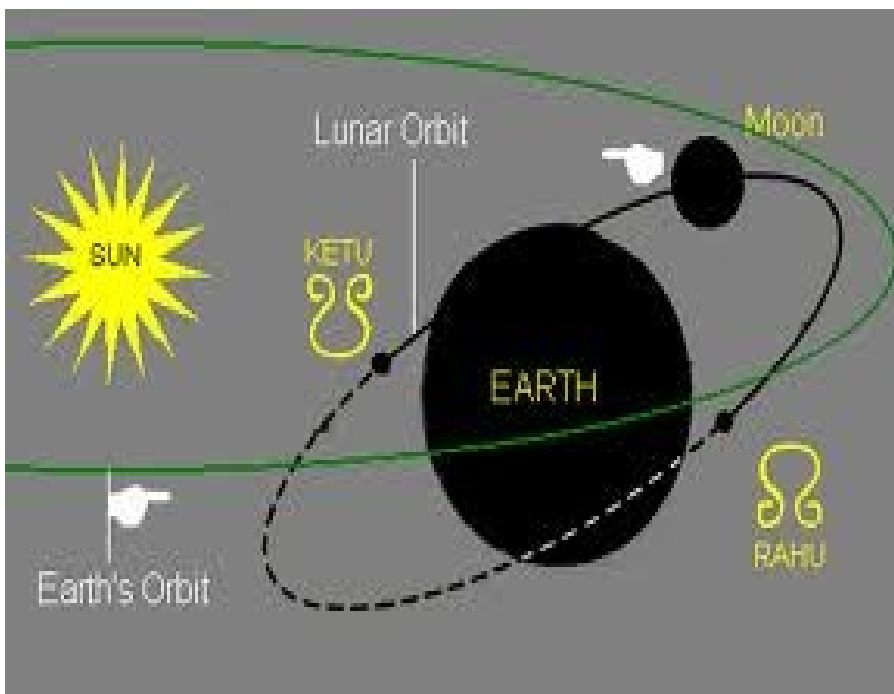
This interpretation is consistent with the Vedic tradition. This is a wonderful myth, of amazing detail. The Gods ask for the aid of the Demons, who live in the Underworld to help stir the Sea of Milk to create Tirtha Amertha or the water of Immortality. Stealing the elixir for themselves, the Gods drink of it. In the confusion, Kala Rau, one of the demons disguised as a God, takes a swallow. The Sun and Moon see Kala Rau and tell Lord Vishnu, who then chops off the Demons head. However the magical elixir has just reached his throat and Kala Rau becomes immortal! In his anger for being “told on” he chases the Moon and Sun to this day, causing the eclipse by swallowing them!



An eclipse happens when there is a lunation near the lunar nodes. The lunar nodes have been called the head and tail of the dragon (or demon) as it was believed that a demonic serpent was swallowing the heavenly orb. Vedic astrologers call these points Rahu and Ketu. Thus Rahu and Ketu represent the two severed halves of the immortal Demon, Kala Rau. Unlike the Gods, who represent forces of Order, the Demons represent forces of Disorder and Chaos.

So we can see that by looking at the process of the Eclipse in two very different ways we come up with a similar idea. The Eclipse represents a rip or tear in the fabric of time, through which the forces of chaos and disorder can enter. The question remains: where could we use a little chaos or disruption?

The Dragon swallowing the Sun is the Shadow swallowing the Ego. The energy of an Eclipse is not "evil" any more than the Shadow part of our Psyche. It simply represents a counterpoint to the regularity and predictability which we crave psychologically. The Ego likes to fancy itself Master of its Universe -or God-like. The role of the Shadow is to pull the Ego off its pedestal. While this may be disruptive it also often leads to growth. Therefore, it is my view that the proper use of Eclipse energy is to invite that energy into some part of your life where you are feeling stuck, stagnant or repressed. The resulting chaos may indeed bring catharsis.



The other characteristic of the Nodes which should be obvious is that they are always in opposition. When two bodies are opposed it means that there is a challenge to develop awareness. The opposition, by nature, is an aspect of tension. Unlike the square, where one is often forced to choose one path over another, the opposition often presents no clear way out of a situation. One is hit from both sides in a barrage from which there is no clear means of escape. It is easy to then become besieged by doubts, and even guilt –thinking that somehow the situation is a result of some karmic mistake we've made. What are we to do then, as we find ourselves “pinned down” by forces that seem to surround us and arrest our movement and development?

Caroline Myss shows us this process of questioning is integral even in the experience of our most shining spiritual exemplars. In her classic book on archetypes, *Sacred Contracts*, Myss reminds us that even Abraham, Jesus, Muhammad and Buddha walked a path that is archetypal –which means it is the same path that you or I must also walk. Even these great leaders were not without their own doubts, fears, questions and “stuck” places on their paths. In fact, the word question contains the word quest – both deriving from Latin *quaestus*: to ask, or to seek.

It can be construed, then, that the early purpose of an opposition is to bring the person to a state of disorientation –only from whence s/he may be initiated into new levels of awareness. In short, without some sort of stressor to induce anxiety (an anxiety to which there is no immediate answer)–growth is simply not possible. It is from the anxiety of disorientation that growth and indeed spiritual awareness are born. The Buddha had to witness sickness, old age and death before he could follow his spiritual path. This is also a basic tenant of many psychological theories such as Dabrowski's theory of Positive Disintegration.

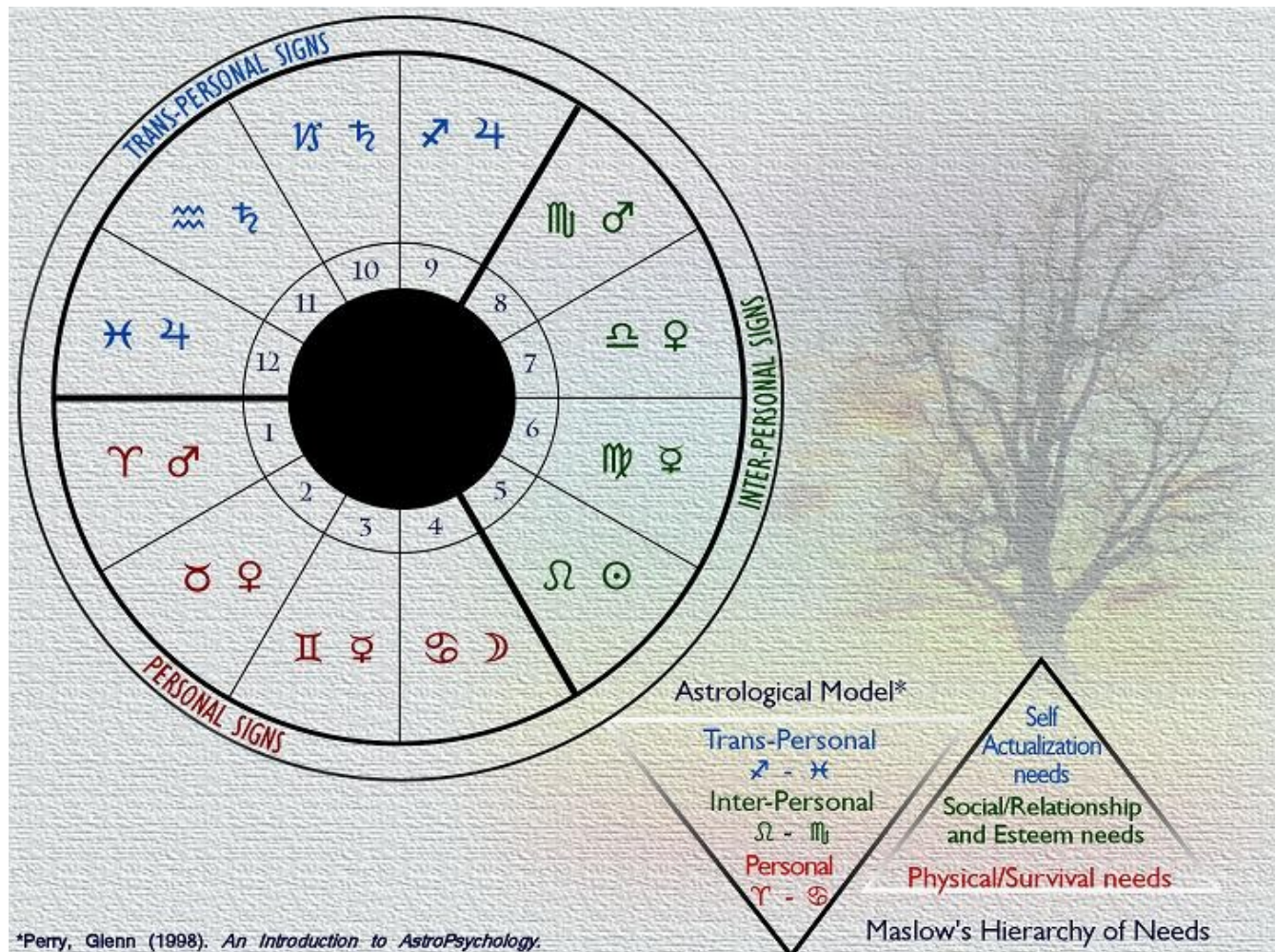
Humanist psychologist and theorist Kazimierz Dabrowski defined personality as “a self-aware, self-chosen, self-affirmed, and self-determined unity of essential individual psychic qualities.” This sounds simple, but it really is not. For Dabrowski, personality only begins to form upon the emergence of the third factor, when a person begins to resist their lower impulses and the habitual responses characteristic of socialization. Emerging autonomy is reflected in conscious and volitional choices of personally meaningful, 'higher' level choices of what “ought to be” in their internal and external milieus.

The North Node is also, and more appropriately called the Ascending Node, because it is where the path of the Moon crosses the path of the Sun (ecliptic) going upward. It is thus interpreted as "where we are going and/or what we are here for" because it represents a place where something previously below (consciousness) now rises up. Something is piercing the main plane of existence (ecliptic) in an upward manner, struggling to become manifest.





Ever since Pluto made the ingress to Sagittarius, all three of the trans-personal planets have been occupying the trans-personal signs of Sagittarius-Pisces. The outer planets are called trans-personal planets because they make a revolution of the Sun beyond an individual lifetime –thus they are seen as signifiers of collective issues. Similarly, the last four signs of the Zodiac are all about collective issues. The first four signs, Aries –Cancer, are *personal* signs where the relationship is to self –through dealing with primal, instinctive, survival based issues (Jupiter and Saturn were here at 9-11). The second four signs, Leo-Scorpio, are *inter-personal* signs, where the self relates to an other -through dealing with social and relationship issues. The last four signs, Sagittarius –Pisces, are *trans-personal* signs, where the self relates to the collective –through dealing with universal, transcendental issues.

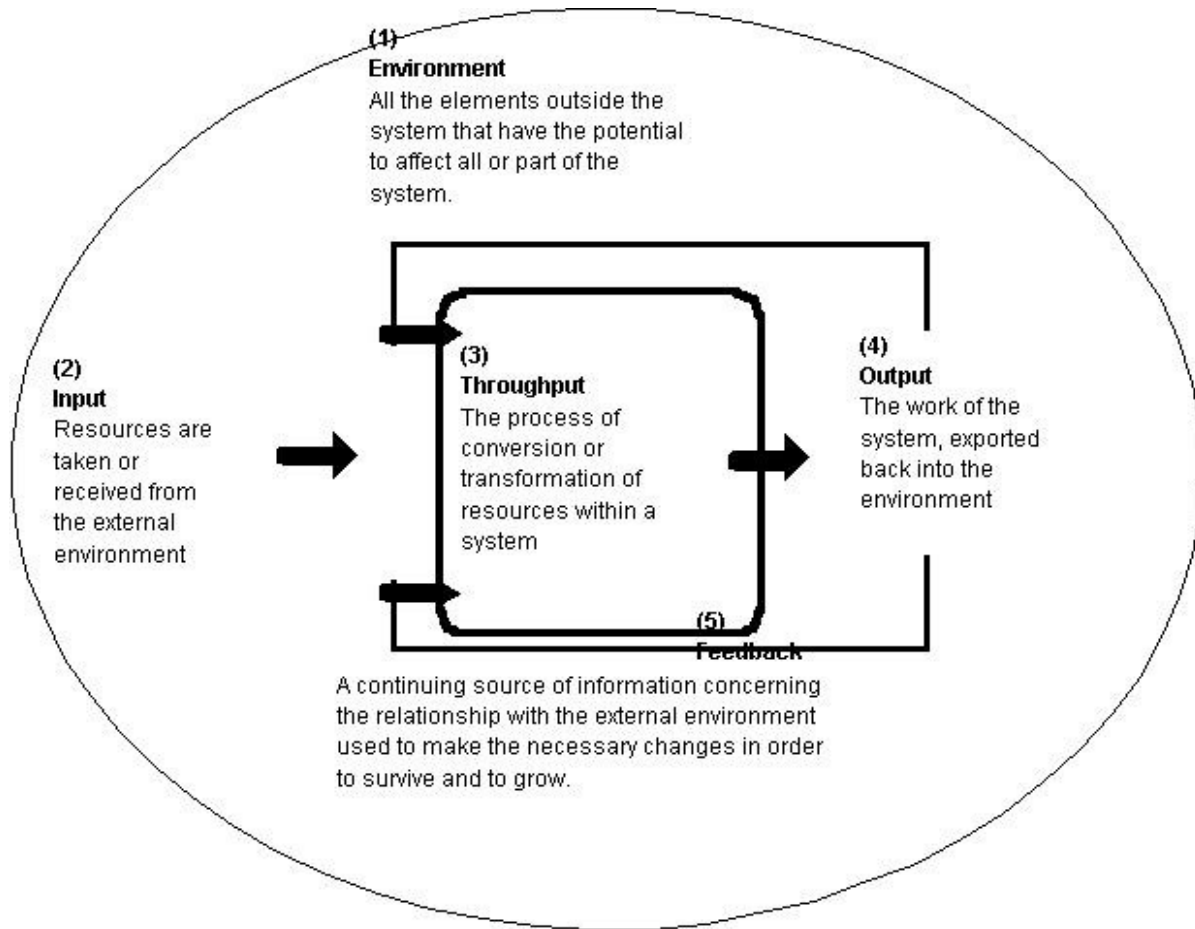


Aries is the primal “I am.” Taurus says: “I have therefore I am.” Gemini says: “I think therefore I am.” Cancer says: “I feel therefore I am.” In Leo we begin to relate to an “other.” Leo relates to “other” by being set apart from and/or performing for them. Virgo learns how to serve an “other.” Libra learns how to develop an equal relationship with “other.” Scorpio then learns how to negotiate issues of dominance/control/power in relationship to “other.”

When we arrive at Sagittarius the “other” becomes Social, collective and/or Transpersonal (the transpersonal signs are ruled by the social planets Jupiter and Saturn). In Sagittarius -the other is The Church or God. As Saturn opposed Pluto from the personal to trans-personal signs of Gemini/Sagittarius, we were faced with the grim reality of acts of terror. The concept of a holy war entered our everyday awareness. The Nodes are activating Gemini/Sagittarius once again to stir up these issues, so that we may question our relationship with these archetypes, and receive the growth and awareness which come with making the personally meaningful, 'higher' level choices.



If we look at this process in terms of Systems Theory, we can perhaps make a little more sense of the chaos. As living organisms people are open systems: they cannot survive without continuously exchanging matter and energy with their environment. This interaction has two components: input, that which enters the system from the outside, and output, that which leaves the system for the environment. The output of a system is in general a direct or indirect result from the input. What comes out, needs to have found a way in first. However, the output is in general quite different from the input: the system (person) is not just a passive tube, but an active processor. For example, the food, drink and oxygen we take in, leave our body as urine, excrements and carbon dioxide. The transformation of input into output by the system is usually called throughput.



As an inversion of the dark/light fractal, we know Eclipses always mean a crisis of some sort. Long term, this is not necessarily a bad thing; the resulting chaos can indeed bring catharsis. Wherever the transiting Nodes fall in your chart are areas of life that are going to undergo some change, or at least have your attention more than usual for the next 18 months or so.

Since it is the sign where North Node eclipses occur now, the house Sagittarius falls will be an area where chaos may be able to enter into your life. This is the input into the system. The input of an eclipse is basically just added psychic energy which stirs the pot and makes any energetic blockages in the organism more apparent. The throughput is our own personal responsibility to maintain awareness of these blockages as they come up, and to begin the internal processing work required to remove these. If our throughput processing is even minimally successful, the output will be an ability to let go of blockages and live with greater ease within the areas of life denoted by the transit South Node in Gemini, and thus a more healthy and enhanced expression of that house.



As the Sybils of Sagittarius/Gemini, the transit Nodes currently speak through a particular pair of Oracles -to particular areas of your life. Consider the guidance below for your Sun Sign, your Ascendant Sign and your Moon Sign. Opposing houses are closely related, so it is helpful to consider the pair of houses as a unit through which input is being transformed to output.

**Sagittarius: 1st House—>7th House.**

The throughput process for the next 18 months will be in your relationship to Self/Other.

- Input: The 1st house is your Persona; it is who we are as social individuals. North Node Eclipses in the 1st house denote a period of personal development and growth in terms of the social masks you wear.
- Output: The 7th house is how we relate to other individuals. When you change, this also changes how you relate to others and vice versa. South Node Eclipses in the 7th house denote a period of change and releasing blockages in your awareness of how you project your Shadow onto other people.

**Scorpio: 2nd House—>8th House.**

The throughput process for the next 18 months will be in your relationship to resources.

- Input: The 2nd house is our personal resources; our possessions, our skills, our talents, and our possessions. North Node Eclipses in the 2nd house denote a period of change and growth in your awareness of what your personal resources are and how you utilize them.
- Output: The 8th house is the house of other people's resources, so both joint finances and intimacy. South Node Eclipses in the 8th house denote a period of change and releasing blockages in your awareness of your responsibilities to others: both physical and emotional. It could also be an indication of a time to explore what truly belongs to all of us, the collective unconscious, via occult activities.

**Libra: 3rd House—>9th House.**

The throughput process for the next 18 months will be in your relationship to communications

- Input: The 3rd house is our local community, our communication and our personal spiritual practices. North Node Eclipses in the 3rd house denote a period of change and growth in your awareness of how you communicate with others, get around your local environment and engage in personal ritual.
- Output: The 9th house is foreign countries, ideas and philosophies, and religion. South Node Eclipses in the 9th house denote a period of change and releasing blockages in your awareness of your World-View and how it conditions your experiences.

**Virgo: 4th House—>10th House.**

The throughput process for the next 18 months will be in your relationship to balancing your private life with your public life.

- Input: The 4th house is your home, family and ancestral heritage. North Node Eclipses in the 4th house denote a period of change and growth in your awareness of your roots and the foundations of your life.
- Output: The 10th house is your career and public reputation. South Node Eclipses in the 10th house denote a period of change and releasing blockages in your awareness of the demands of your career or public life and building a solid reputation.

**Leo: 5th House—>11th House.**

The throughput process for the next 18 months will be in your relationship to individual expression and group participation.

- Input: The 5th house is your creative expression, recreation, children, and love affairs. Eclipses in the 5th house denote a period of change and growth in your awareness of the creative urge, and romantic partners.
- Output: The 11th house is the house of friendships; this is the house of group participation and shared creativity. Eclipses in the 11th house denote a period of change and releasing blockages in your awareness of your peers and social networks.

**Cancer: 6th House—>12th House.**

The throughput process for the next 18 months will be in your relationship to routine, both physical and spiritual.

- Input: The 6th house is all of the things we do on a daily basis, our daily routines, including our jobs. North Node Eclipses in the 6th house denote a period of change and growth in your awareness of your routines, skill sets, and your body's physical needs to avoid illness.
- Output: The 12th house is our personal unconscious. South Eclipses in the 12th house denote a period of change and releasing blockages in your awareness of needing to spend time alone, exploring your personal unconscious via meditation, journaling, breathwork, shamanic journeying or other spiritual exercise.

**Gemini: 7th House → 1st House.**

The throughput process for the next five months will be in your relationship to Self/Other.

- Input: The 7th house is how we relate to other individuals. When you change, this also changes how you relate to others and vice versa. North Node Eclipses in the 7th house denote a period of change and growth in your awareness of others and how you meet your Shadow via other people.
- Output: The 1st house is your Persona; it is who we are as social individuals. Eclipses in the 1st house denote a period of change and releasing blockages in personal development in terms of the social masks you wear.

**Taurus: 8th House → 2nd House.**

The throughput process for the next five months will be in your relationship to resources.

- Input: The 8th house is the house of other people's resources, so both joint finances and intimacy. North Node Eclipses in the 8th house denote a period of change and growth in your awareness of your responsibilities to others: both physical and emotional. It could also be an indication of a time to explore what truly belongs to all of us, the collective unconscious, via occult activities.
- Output: The 2nd house is our personal resources; our possessions, our skills, our talents, and our possessions. South Node Eclipses in the 2nd house denote a period of change and releasing blockages in your awareness of what your personal resources are and how you utilize them.

**Aries: 9th House → 3rd House.**

The throughput process for the next five months will be in your relationship to communications

- Input: The 9th house is foreign countries, ideas and philosophies, and religion. North Node Eclipses in the 9th house denote a period of change and growth in your awareness of your World-View and how it conditions your experiences.
- Output: The 3rd house is our local community, our communication and our personal spiritual practices. South Node Eclipses in the 3rd house denote a period of change and releasing blockages in your awareness of how you communicate with others, get around your local environment and engage in personal ritual.

**Pisces: 10th House → 4th House.**

The throughput process for the next five months will be in your relationship to balancing your private life with your public life.

- Input: The 10th house is your career and public reputation. North Node Eclipses in the 10th house denote a period of change and growth in your awareness of the demands of your career or public life and building a solid reputation.
- Output: The 4th house is your home, family and ancestral heritage. South Node Eclipses in the 4th house denote a period of change and releasing blockages in your awareness of your roots and the foundations of your life.

**Aquarius: 11th House → 5th House.**

The throughput process for the next five months will be in your relationship to individual expression and group participation.

- Input: The 11th house is the house of friendships; this is the house of group participation and shared creativity. North Node Eclipses in the 11th house denote a period of change and growth in your awareness of your peers and social networks.
- Output: The 5th house is your creative expression, recreation, children, and love affairs. South node Eclipses in the 5th house denote a period of change and releasing blockages in your awareness of the creative urge, and romantic partners.

**Capricorn: 12th House → 6th House.**

The throughput process for the next five months will be in your relationship to routine, both physical and spiritual.

- Input: The 12th house is our personal unconscious. North node Eclipses in the 12th house denote a period of change and growth in your awareness of need to spend time alone, exploring your personal unconscious via meditation, journaling, breathwork, shamanic journeying or other spiritual exercise.
- Output: The 6th house is all of the things we do on a daily basis, our daily routines, including our jobs. South node Eclipses in the 6th house denote a period of change and releasing blockages in your awareness of your routines, skill sets, and your body's physical needs to avoid illness.



# Commune with *The Goddess*

The *only* astrology podcast devoted to empowering the sacred feminine within you!



## **Goddess Astrology Podcast**



Tune in free at iTunes  
or discover more at

Your Host  
Gary P. Caton

[www.DreamAstrologer.com](http://www.DreamAstrologer.com)

# Discover Your Guiding Star



## **Shamanic Astrology**

- ◆ Supportive Counseling to Find your True North
- ◆ Internationally Acclaimed
- ◆ 16 Years Experience

**Gary P.  
Caton**

828-505-2481

**FREE** Horoscopes, Astrology Reports, Newsletter & Podcast at

[DreamAstrologer.com](http://DreamAstrologer.com)